

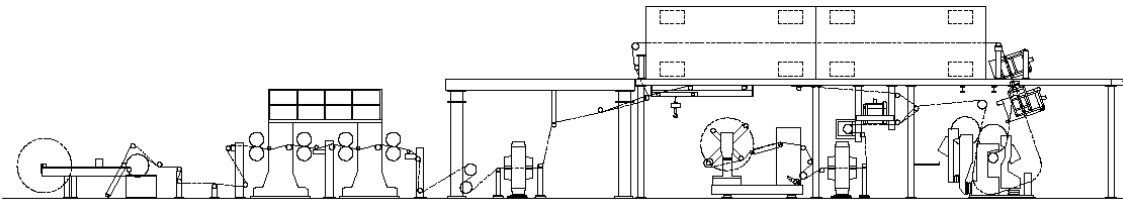


Metering & Pond Size Press at WMU

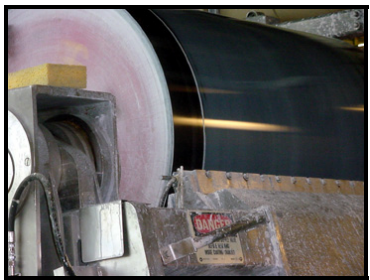


PILOT COATER - Pond size press and Metering size press

Width: 40 in. (1000 mm) wide nominal
 Speed: maximum 4,000 ft. per minute (1220 m/min)
 Metering: Rod – smooth or grooved
 Blade – beveled or bent
 Airknife – 26" (660 mm) width
 Applicator: Applicator roll (flooded-nip)
 Short dwell time
 Metering (film) size press
 Pond size press
 Calendering: Steel-to-steel, one nip
 Hot soft-nip, four nips, on-line



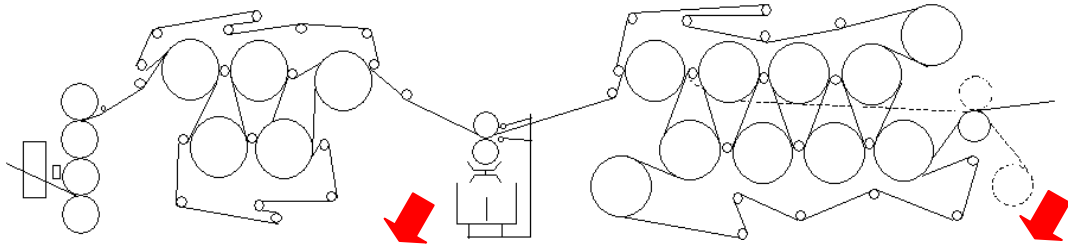
Pond Size Press
 1000 fpm (305 mpm)
 Left – 10% starch
 Right – 14% CaCO₃/starch
 10 gsm
 5.5% moisture



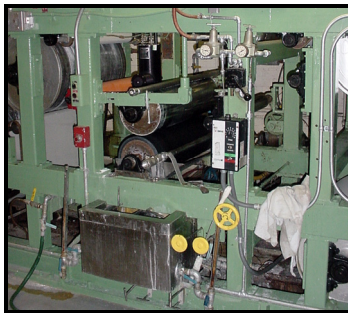
Metering Size Press
 3,000 fpm (910 mpm)
 63% - clay/CaCO₃/SBR/Starch
 Left – top roll
 Right – bottom roll
 18 gsm
 5% moisture

FOURDRINIER PAPER MACHINE – pond size press, fourdrinier table (spray), wet end

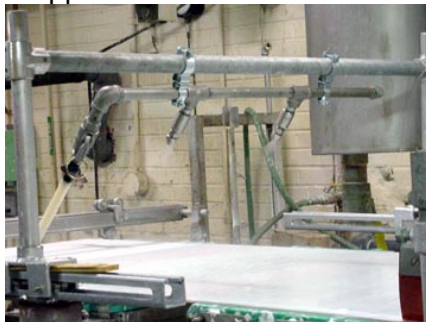
Width:	24 in. (610 mm) wide
Speed:	maximum 120 fpm (36 mpm)
Basis Weight:	16 to 410 lb. (3,000 ft ² ream size) or 26 to 700 gsm
24/7 Papermaking:	stock and additive preparation sized to make extended continuous operations practical at production rates up to 160 lbs. per hour (72.5 kg/hr).
Size Press:	Horizontal pond size press - two-stage run tank allows instantaneous size changes with minimum stock loss. The paper machine can also accept up to 18" (460 mm) diameter rolls off your own paper machine or slit rolls at WMU. Depending on how much paper you need, you can test as many as 35 different size press formulations in a single eight-hour day
Spray Bar:	Apply starch slurry to the newly formed sheet before it hits the first dryer can. The spray imparts internal sizing benefits the closer the spray is to the headbox and a surface sizing benefit when applied closer to the dry line.
Calendering:	Steel-to-steel, three nips



Pond Size Press



Spray Bar Application on Fourdrinier Table



View from front



View from back